

The Lakeridge Influence

- **This stakeholder's report started at Lakeridge eight years ago and is now required by all schools in the Alpine School District.**
- **The FLEX intervention model that began with Lakeridge five years ago has been adopted by many other elementary, junior high, and high schools in Alpine School District. This model is also becoming popular nationwide as schools look to replicate the success in increasing student learning that has taken place at Lakeridge.**
- **Lakeridge has a chapter highlighting its school improvement efforts in the book, "Raising the Bar Closing the Gap: Whatever it Takes," by Rick Dufour who is a leading educational reformer.**
- **Lakeridge has consulted for schools from Connecticut, Florida, Oregon, Washington, Texas, Kentucky, Idaho, and points between on how to set up professional learning communities for junior high and middle schools.**
- **Lakeridge has hosted visits from nearly every school district in Utah. These visits have been to learn the Lakeridge way of doing education and specifically how we create standards, assess our students, and intervene with those students when they do not learn.**
- **As we have experienced success in helping ALL students learn at a high level, we have felt a responsibility to share our knowledge with others to benefit as many students as possible.**

Nonprofit
Org.
US postage
PAID
Orem, UT
Permit #19

Lakeridge Jr. High School
951 South 400 West
Orem, UT 84058

Lakeridge Jr. High School

Stakeholder Report
2011-2012



BEST OF
STATE

We will ensure high
levels of learning for all
students

Phone: 801-227-8752
www.lakeridge.alpinedistrict.org
November 2011

Lakeridge Jr. High Stakeholder Report

This brochure is our annual stakeholder report. The purpose of this brochure is to report to our school community how we are doing in our attempt to get all students to learn.

NCLB—Federal Report

In accordance with the No Child Left Behind Act, the federal government publishes a report card based on standardized testing performance. On this year's report Lakeridge Junior High met requirements for adequate yearly progress.

School	
Name :	LAKERIDGE JR HIGH
Number :	406
District	ALPINE DISTRICT
Did school make AYP?	Yes*



What makes us a Professional Learning Community?

We are involved in an ongoing process in which our teachers work collaboratively in cycles of collective inquiry and action research to achieve better results for the students we serve. We focus on three principles: 1. Creating a collaborative culture 2. Focus on learning 3. Results orientation

1. Collaborative Culture

Each Monday, Lakeridge teachers work as teams to identify students who are not learning, so they can intervene appropriately to get them to learn. They also examine areas where instruction can improve. The collaborative model has been instrumental in improving student learning as demonstrated in the proficiency summary following.

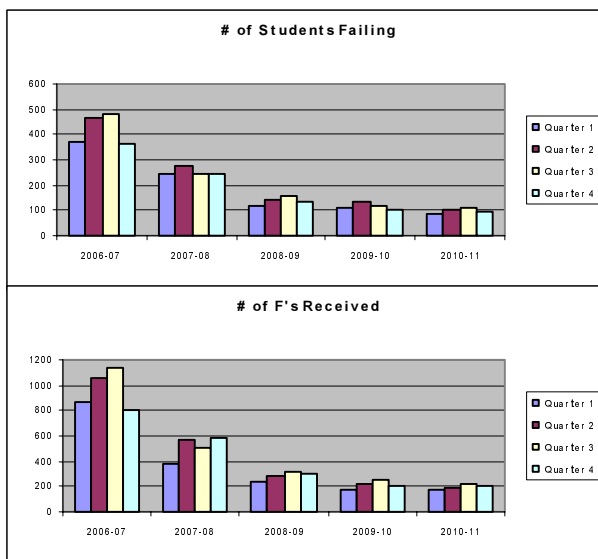
Lakeridge Student Proficiency Summary State Criterion Reference Test (CRT's)

Subject	2002	2011	Growth
English 7	80.5%	87%	6.5%
English 8	64.3%	96%	31.7%
English 9	72.8%	93%	20.2%
Math 7	22%*	81%	59%
Pre-Algebra	60.2%	83%	22.8%
Algebra	64.7%	92%	27.3%
Geometry	47.7%	99%	51.3%
Algebra II	81%**	98%	17%
Science 7	80.5%	84%	3.5%
Science 8	82%	76%	-6%
Earth Systems	76.6%	81%	4.4%
Biology	97.7%	100%	2.3%

*Data first collected in 2004 **Data first collected in 2010

2. Focus on Learning

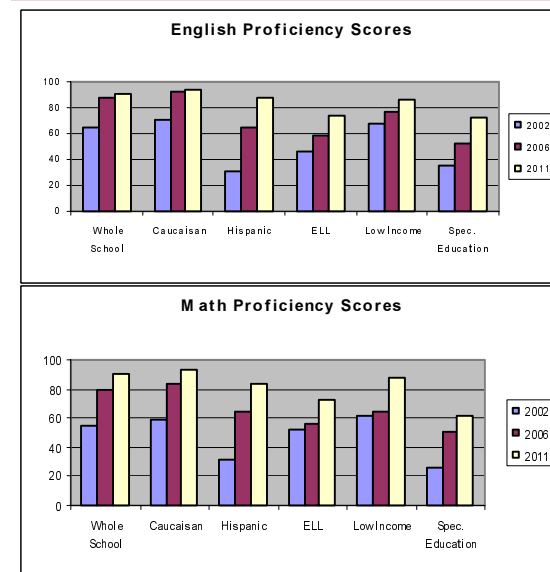
As teacher teams, Lakeridge has developed a common set of learning targets and corresponding assessments to determine if students have reached those learning targets. If students do not learn, we give them additional time and support during FLEX time to help ensure their learning. Below is the decreased amount of failing grades since implementing FLEX time.



3. Results Orientation

The mission of Lakeridge Jr. High School is to create high levels of learning for ALL students. This requires Lakeridge to examine the learning of groups of students who traditionally struggle in the learning process. Lakeridge has seen dramatic improvement in learning for ALL students over the past several years as demonstrated below.

Lakeridge Demographic Learning Data 2002, 2006, 2011



2011-2012 Goals

- An overall pass rate of 90 percent on end of level assessments in Math, Language Arts, and Science.
- Science 8 is a focus area of the school. The school has set a goal of 85 percent pass rate on end of level assessment.
- Lakeridge has a focus area on special education students for the 2011-2012 school year. Our goal is to improve special education pass rates on each of the end of level assessments by 5 percent.